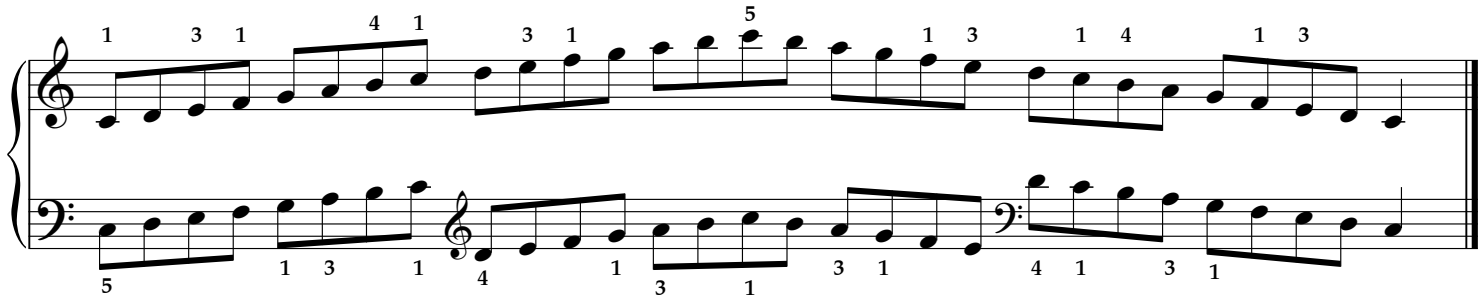


랑랑의 피아노 마스터 Level 3 스케일

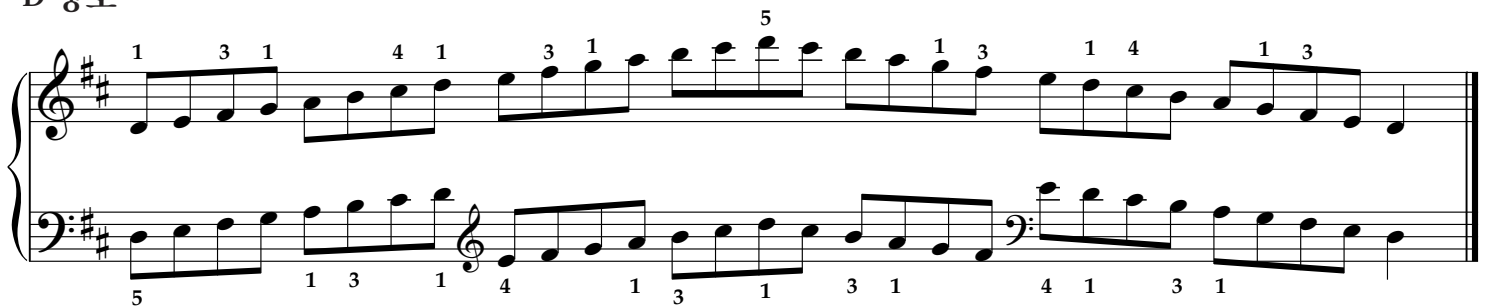
C 장조



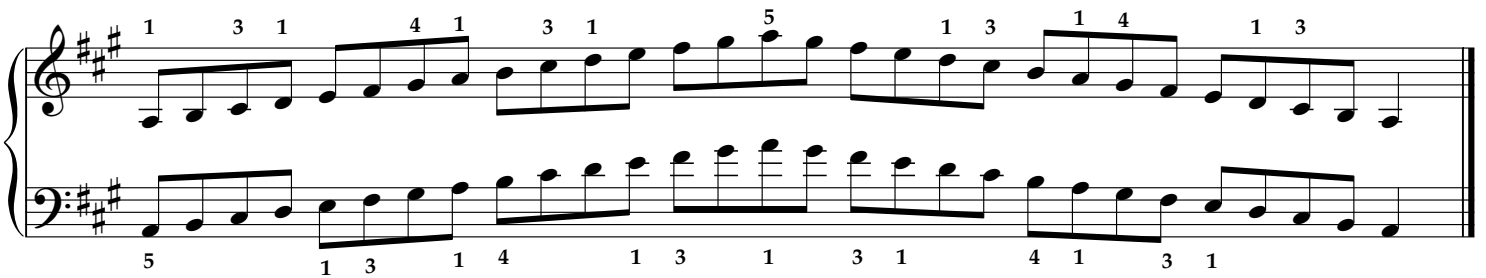
G 장조



D 장조



A 장조



E 장조



B 장조

Ascending: Treble clef, B major key signature (three sharps). Notes: B2 (1), C#3 (3), D#3 (1), E4 (4), F#4 (1), G#4 (3), A4 (1), B4 (5), A4 (1), G#4 (3), F#4 (1), E4 (1), D#3 (1), C#3 (1), B2 (1).
 Descending: Bass clef, B major key signature (three sharps). Notes: B4 (4), A4 (1), G#4 (4), F#4 (1), E4 (1), D#3 (3), C#3 (1), B4 (4), A4 (1), G#4 (3), F#4 (1), E4 (1), D#3 (3), C#3 (1), B4 (4).

F 장조

Ascending: Treble clef, F major key signature (one flat). Notes: F2 (1), G2 (4), A2 (1), B2 (3), C3 (1), D3 (4), E3 (1), F3 (4), G3 (4), A3 (3), B3 (4), C4 (1).
 Descending: Bass clef, F major key signature (one flat). Notes: F3 (5), E3 (1), D3 (3), C3 (1), B2 (4), A2 (1), G2 (3), F2 (1), E2 (4), D2 (1), C2 (3), B1 (1), A1 (4), G1 (3), F1 (1).

Bb 장조

Ascending: Treble clef, Bb major key signature (two flats). Notes: Bb2 (2), C3 (1), D3 (3), Eb3 (1), F3 (4), G3 (1), Ab3 (3), Bb3 (1), C4 (4), Bb3 (1), Ab3 (3), G3 (1), F3 (1), Eb3 (1), C3 (1), Bb2 (1).
 Descending: Bass clef, Bb major key signature (two flats). Notes: Bb3 (3), Ab3 (1), F3 (4), Eb3 (1), D3 (3), C3 (1), Bb2 (1), Ab2 (4), G2 (1), F2 (2), Eb2 (1), D2 (4), C2 (1), Bb1 (3), Ab1 (4), G1 (1).

Eb 장조

Ascending: Treble clef, Eb major key signature (three flats). Notes: Eb2 (2), F3 (1), G3 (4), Ab3 (1), Bb3 (3), C4 (1), Db4 (4), Eb4 (1), F4 (3), Eb4 (1), Db4 (3), C4 (1), Bb3 (1), Ab3 (4), G3 (1), F3 (1), Eb2 (1).
 Descending: Bass clef, Eb major key signature (three flats). Notes: Eb4 (3), Db4 (1), C4 (4), Bb3 (1), Ab3 (3), G3 (1), F3 (1), Eb3 (4), Db3 (1), C3 (2), Bb2 (1), Ab2 (4), G2 (1), F2 (3), Eb2 (4), Db1 (1).

A 화성단음계

Ascending: Treble clef, A major key signature (three sharps). Notes: A2 (1), B2 (3), C#3 (1), D#3 (4), E4 (1), F#4 (3), G#4 (1), A4 (5), B4 (1), C#4 (3), D#4 (1), E4 (1), F#4 (1), G#4 (1), A4 (1).
 Descending: Bass clef, A major key signature (three sharps). Notes: A4 (5), G#4 (1), F#4 (3), E4 (1), D#4 (4), C#4 (1), B4 (3), A4 (1), G#4 (3), F#4 (1), E4 (1), D#4 (3), C#4 (1), B4 (4), A4 (1).

A 가락단음계

Ascending: Treble clef, A major key signature (three sharps). Notes: A2 (1), B2 (3), C#3 (1), D#3 (4), E4 (1), F#4 (3), G#4 (1), A4 (5), B4 (1), C#4 (3), D#4 (1), E4 (1), F#4 (1), G#4 (1), A4 (1).
 Descending: Bass clef, A major key signature (three sharps). Notes: A4 (5), G#4 (1), F#4 (3), E4 (1), D#4 (4), C#4 (1), B4 (3), A4 (1), G#4 (3), F#4 (1), E4 (1), D#4 (3), C#4 (1), B4 (4), A4 (1).

E 화성단음계

Handwritten musical notation for the E major scale, harmonic fingering. The treble staff starts with a treble clef and a key signature of one sharp (F#). The bass staff starts with a bass clef and a key signature of one sharp (F#). The notation includes fingerings: Treble (1, 3, 1, 4, 1, 3, 1, 5, 4, 1, 3, 1, 4, 1, 3) and Bass (5, 1, 3, 1, 4, 1, 3, 1, 3, 1, 4, 1, 3, 1).

E 가락단음계

Handwritten musical notation for the E major scale, melodic fingering. The treble staff starts with a treble clef and a key signature of one sharp (F#). The bass staff starts with a bass clef and a key signature of one sharp (F#). The notation includes fingerings: Treble (1, 3, 1, 4, 1, 3, 1, 5, 4, 1, 3, 1, 4, 1, 3) and Bass (5, 1, 3, 1, 4, 1, 3, 1, 3, 1, 4, 1, 3, 1).

B 화성단음계

Handwritten musical notation for the B major scale, harmonic fingering. The treble staff starts with a treble clef and a key signature of two sharps (F#, C#). The bass staff starts with a bass clef and a key signature of two sharps (F#, C#). The notation includes fingerings: Treble (1, 3, 1, 4, 1, 3, 1, 5, 4, 1, 3, 1, 4, 1, 3) and Bass (4, 1, 4, 1, 3, 1, 4, 1, 4, 1, 3, 1, 4, 1).

B 가락단음계

Handwritten musical notation for the B major scale, melodic fingering. The treble staff starts with a treble clef and a key signature of two sharps (F#, C#). The bass staff starts with a bass clef and a key signature of two sharps (F#, C#). The notation includes fingerings: Treble (1, 3, 1, 4, 1, 3, 1, 5, 4, 1, 3, 1, 4, 1, 3) and Bass (4, 1, 4, 1, 3, 1, 4, 1, 4, 1, 3, 1, 4, 1).

D 화성단음계

Handwritten musical notation for the D major scale, harmonic fingering. The treble staff starts with a treble clef and a key signature of two sharps (F#, C#). The bass staff starts with a bass clef and a key signature of two sharps (F#, C#). The notation includes fingerings: Treble (1, 3, 1, 4, 1, 3, 1, 5, 4, 1, 3, 1, 4, 1, 3) and Bass (5, 1, 3, 1, 4, 1, 3, 1, 3, 1, 4, 1, 3, 1).

D 가락단음계

Handwritten musical notation for the D major scale, melodic fingering. The treble staff starts with a treble clef and a key signature of two sharps (F#, C#). The bass staff starts with a bass clef and a key signature of two sharps (F#, C#). The notation includes fingerings: Treble (1, 3, 1, 4, 1, 3, 1, 5, 4, 1, 3, 1, 4, 1, 3) and Bass (5, 1, 3, 1, 4, 1, 3, 1, 3, 1, 4, 1, 3, 1).

G 화성단음계

1 3 1 4 1 3 1 5 1 3 1 4 1 3

5 1 3 1 4 1 3 1 3 1 4 1 3 1

G 가락단음계

1 3 1 4 1 3 1 5 1 3 1 4 1 3

5 1 3 1 4 1 3 1 3 1 4 1 3 1

C 화성단음계

1 3 1 4 1 3 1 5 1 3 1 4 1 3

5 1 3 1 4 1 3 1 3 1 4 1 3 1

C 가락단음계

1 3 1 4 1 3 1 5 1 3 1 4 1 3

5 1 3 1 4 1 3 1 3 1 4 1 3 1

C에서 시작하는 반음계 스케일

1 3 2 3 2 3 2 3 2 3 2 3 2 3

2 1 3 1 3 2 3 2 3 2 3 2 3 2

1 3 3 2 3 2 3 2 3 2 3 2 3 2

2 3 2 3 2 3 2 3 2 3 2 3 2 3

랑랑의 피아노 마스터 Level 3 아르페지오

양손을 각각 연습한 뒤, 완전해 지고나면 양손을 함께 연습하세요.

C 장조

Handwritten musical notation for C major arpeggio. The right hand starts on middle C (C4) and ascends: C4, D4, E4, F4, G4, A4, B4, C5. The left hand starts on C3 and ascends: C3, D3, E3, F3, G3, A3, B3, C4. Fingering: RH (1, 3, 1, 5, 1, 3), LH (5, 3, 1, 3, 1, 1).

G 장조

Handwritten musical notation for G major arpeggio. The right hand starts on G4 and ascends: G4, A4, B4, C5, D5, E5, F#5, G5. The left hand starts on G3 and ascends: G3, A3, B3, C4, D4, E4, F#4, G4. Fingering: RH (1, 3, 1, 5, 1, 3), LH (5, 3, 1, 3, 1, 1).

D 장조

Handwritten musical notation for D major arpeggio. The right hand starts on D4 and ascends: D4, E4, F#4, G4, A4, B4, C#5, D5. The left hand starts on D3 and ascends: D3, E3, F#3, G3, A3, B3, C#4, D4. Fingering: RH (1, 3, 1, 5, 1, 3), LH (5, 3, 1, 3, 1, 1).

A 장조

Handwritten musical notation for A major arpeggio. The right hand starts on A4 and ascends: A4, B4, C#5, D5, E5, F#5, G#5, A5. The left hand starts on A3 and ascends: A3, B3, C#4, D4, E4, F#4, G#4, A4. Fingering: RH (1, 3, 1, 5, 1, 3), LH (5, 3, 1, 3, 1, 1).

E 장조

Handwritten musical notation for E major arpeggio. The right hand starts on E4 and ascends: E4, F#4, G#4, A4, B4, C#5, D#5, E5. The left hand starts on E3 and ascends: E3, F#3, G#3, A3, B3, C#4, D#4, E4. Fingering: RH (1, 3, 1, 5, 1, 3), LH (5, 3, 1, 3, 1, 1).

B 장조

Handwritten musical notation for B major arpeggio. The right hand starts on B4 and ascends: B4, C#5, D#5, E5, F#5, G#5, A#5, B5. The left hand starts on B3 and ascends: B3, C#4, D#4, E4, F#4, G#4, A#4, B4. Fingering: RH (1, 3, 1, 5, 1, 3), LH (5, 3, 1, 3, 1, 1).

F 장조

Handwritten musical notation for F major arpeggio. The right hand starts on F4 and ascends: F4, G4, A4, Bb4, C5, D5, E5, F5. The left hand starts on F3 and ascends: F3, G3, A3, Bb3, C4, D4, E4, F4. Fingering: RH (1, 3, 1, 5, 1, 3), LH (5, 3, 1, 3, 1, 1).

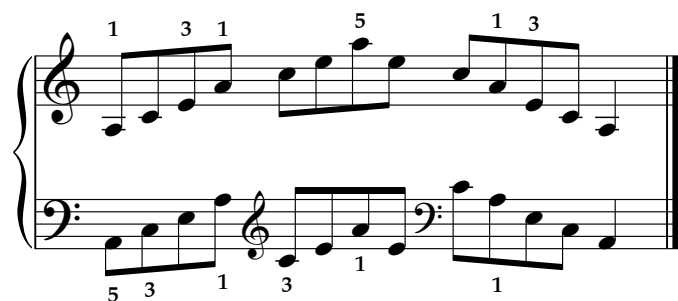
Bb 장조

Handwritten musical notation for Bb major arpeggio. The right hand starts on Bb4 and ascends: Bb4, C5, D5, Eb5, F5, G5, Ab5, Bb5. The left hand starts on Bb3 and ascends: Bb3, C4, D4, Eb4, F4, G4, Ab4, Bb4. Fingering: RH (2, 1, 2, 4, 1, 4, 4, 1, 2), LH (4, 1, 4, 1, 2, 1).

Eb 장조

Handwritten musical notation for Eb major arpeggio. The right hand starts on Eb4 and ascends: Eb4, F4, G4, Ab4, Bb4, C5, D5, Eb5. The left hand starts on Eb3 and ascends: Eb3, F3, G3, Ab3, Bb3, C4, D4, Eb4. Fingering: RH (2, 1, 2, 4, 1, 4, 4, 1, 2), LH (2, 1, 4, 1, 4, 2, 1).

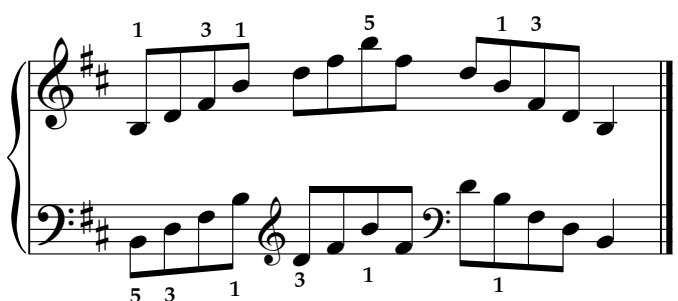
C 장조



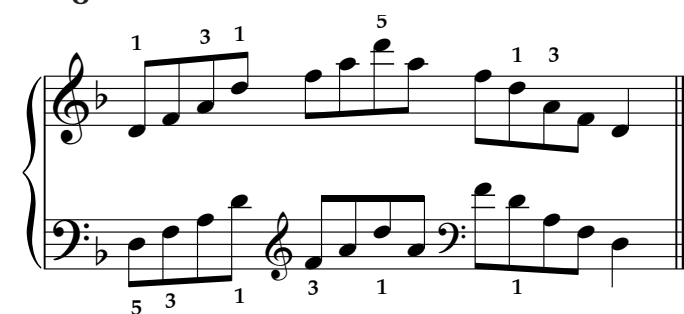
G 장조



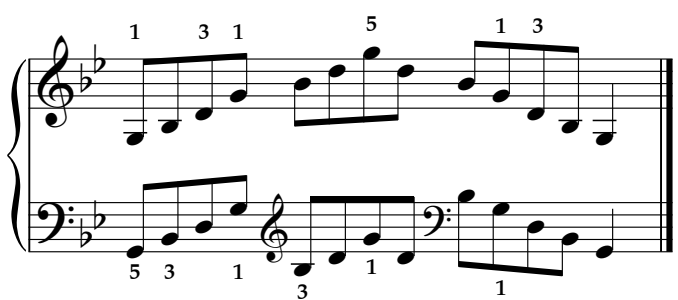
D 장조



A 장조



E 장조



B 장조

